

Nikon

DS-L4

**Microscope Camera Control Unit
Software Update Manual**

Introduction

Thank you for purchasing a Nikon product.

This procedure manual is intended for users who want to update software for Nikon DS-L4 Microscope Camera Control Unit. Fully read the manual before the operation to make sure that you can update the software correctly.

- No part of this manual may be reproduced or transmitted in any form without prior written permission from Nikon.
- The contents of this manual are subject to change without notice.
- Although every effort has been made to ensure the accuracy of this manual, errors or inconsistencies may remain. If you note any points that are unclear or incorrect, please contact your nearest Nikon representative.
- If you intend to use any other equipment with this product, read the manual for that equipment too.
- If this equipment is used in a manner not specified by the manufacturer, the protection provided by the equipment may be impaired.

Prerequisite knowledge

This manual assumes a basic familiarity with Windows. If you come across unfamiliar terms or operations while reading through this manual, consult the user's manual for your version of Windows.

Disclaimer

Nikon shall not be liable for any damages and problems on user side or on a third-party side, which may result from the use of this software.

Trademarks in this manual

- Microsoft and Windows are registered trademarks of Microsoft Corporation in the United States and other countries.
- microSD is a trademark of SD-3C, LLC.
- Products and brand names are trademarks or registered trademarks of their respective companies.
- In this manual, "TM" and ® marks are not used to identify registered trademarks and trademarks.

Contents

Chapter 1 Updating the DS-L4 Software.....1

1.1 Preparations.....1

1.2 Starting the DS-L4 Administration Tool1

1.3 Activating the Installer.....2

1.4 Restarting the DS-L43

Chapter 2 Repairing the DS-L4 Application of the Current Installed Version.....5

Chapter 1 Updating the DS-L4 Software

1.1 Preparations

1. Download the DS-L4 application from the Nikon Download Site to your PC.
2. Connect a USB memory drive or microSD card to your PC and create a new folder in it. Give an arbitrary name to the folder.
3. Decompress the downloaded file. Copy the included file, DSL4Setup.msi, to the folder created in Step 2.

1.2 Starting the DS-L4 Administration Tool

1. On the DS-L4, tap [SETTINGS], [DS SETUP], and [MAIN] to display the [MAIN] screen.

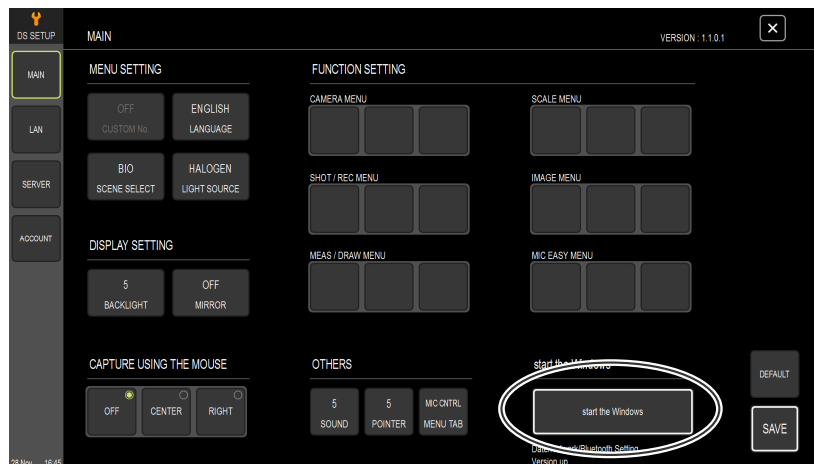


Settings

❗ If you have changed the settings, save the changes.

If you have changed settings in the [DS SETUP] menu, tap [SAVE] to save the changes. If you close the screen or move to another screen without saving the changes, the changes will be lost.

2. In the [start the Windows] area, tap [start the Windows].



Starting Windows

A confirmation message appears. If you want to start Windows, select [YES]. The DS-L4 application terminates, and the Windows login window appears.

✔ To confirm the installed version

The currently installed version is indicated on the upper right of the [DS SETUP] > [MAIN] screen.

3. Select “DSL4Adm” for the user as a Windows administrator and enter “root” for the password.
If the on-screen keyboard for password entry does not appear, tap the password entry field.
4. On the desktop, double-tap the DSL4 Admin Tool icon to start the Administration Tool.



DSL4 Admin Tool icon

5. When a confirmation message “Do you want to allow the following program from an unknown publisher to make changes to this computer?” appears, tap [Yes].

1.3 Activating the Installer

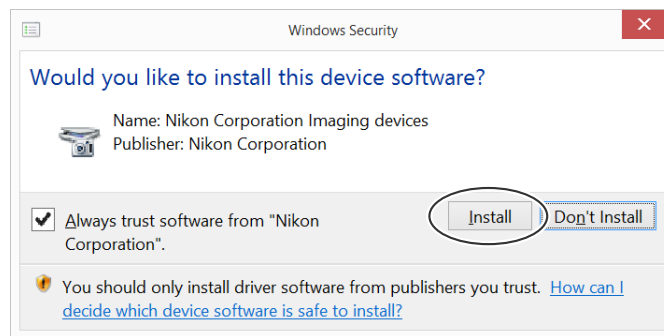
1. Connect the USB memory drive or miniSD card (prepared in “1.1 Preparations”) to the DS-L4.
2. On the Administration Tool screen, tap [Data load and update DS-L4] of [Update Menu].
3. Tap [This PC] in the folder list to show USB memory drive or miniSD card.
4. Select the folder in the USB memory drive or miniSD card, whichever stores the installer DSL4Setup.msi, and then tap [OK].
5. A dialog box appears to confirm if you want to update immediately. Tap [Yes]. Installation starts.

6. A confirmation window appears asking whether you want to initialize the configuration. Tap [Yes] or [No].

Selecting [Yes] resets the following settings to the factory defaults.

- All user accounts
- All camera settings
- All record settings
- All calibration settings
- All network settings
- Any other custom settings

7. When the device software security check window appears as shown below, tap [Install].

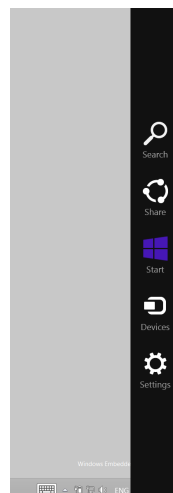


Device Software Security Check Window

8. When a message indicating success of update/installation appears, tap [OK].
9. Tap [Close] on the "Installation Complete" screen.
10. Tap [Exit] on the DS-L4 Administration Tool screen to terminate the installation procedure.

1.4 Restarting the DS-L4

1. Swipe from the right end to the center of the screen to display the charms bar as shown in the figure below. (If you are using a mouse, the charms bar appears at the right side of the screen when you position the mouse pointer at the top or bottom right corner of the screen.)

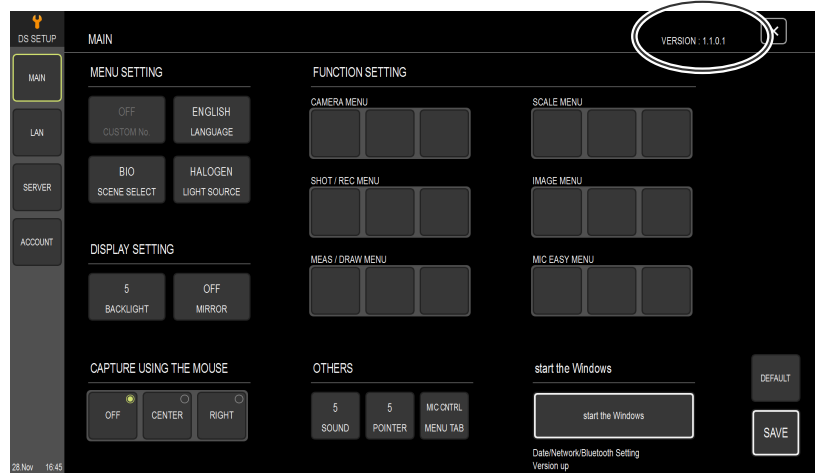


Charms Bar

2. Tap **[Settings]**, **[Power]**, and then **[Restart]** to restart the DS-L4.

After restarting the DS-L4, it may take about a minute for the login screen (or the live image with a menu) to appear. Wait for a while.

3. Tap **[SETTINGS]**, **[DS SETUP]**, and **[MAIN]** to check the version information on the **[MAIN]** screen.



Installed Version Check

Chapter 2 Repairing the DS-L4 Application of the Current Installed Version

If the DS-L4 application does not operate normally for some reason, it may be restored to normal condition by repairing. This operation can also be performed to reset the application to the factory default settings without changing the version.

1. **Start the Administration Tool according to the procedure described in “1.2 Starting the DS-L4 Administration Tool”.**
2. **On the Administration Tool screen, tap [Update/Recovery DS-L4] under [Update Menu].**
3. **Select [Repair DS-L4 Application Verx.x.x.x], and then tap [Finish].**

Repairing the application does not require the installer DSL4Setup.msi.

Options of [Update/Recovery DS-L4]

Do not use [Remove DS-L4 Application Verx.x.x.x]. If you use this option, the DS-L4 may become unable to operate normally.

4. **A confirmation window appears asking whether you want to initialize the configuration. Tap [Yes] or [No].**

Selecting [Yes] resets the following settings to the factory defaults.

- All user accounts
- All camera settings
- All record settings
- All calibration settings
- All network settings
- Any other custom settings

5. **When a message indicating success of update/installation appears, tap [OK].**
6. **Tap [Close] on the “Installation Complete” screen.**
7. **Tap [Exit] on the DS-L4 Administration Tool screen to terminate the update/installation procedure.**