

***Nikon***

**NIS-Elements LE**

**Stream Manual**



# Contents

<b>1</b>	<b>Overview.....</b>	<b>1</b>
<b>2</b>	<b>Function Modes and Operating Environment .....</b>	<b>1</b>
<b>3</b>	<b>Web Browser.....</b>	<b>3</b>
<b>4</b>	<b>Installation.....</b>	<b>4</b>
4.1	This Device Mode.....	4
4.2	Server Mode.....	4
4.3	Internet Mode .....	4
<b>5</b>	<b>How To Use .....</b>	<b>5</b>
5.1	Set the Streaming Options. ....	5
5.1.1	This Device Mode .....	5
5.1.2	Server Mode .....	6
5.1.3	Internet Mod.....	7
5.2	Start the Stream. ....	8
5.3	View the Stream. ....	8
5.4	End the Stream. ....	8
<b>6</b>	<b>Notes.....</b>	<b>9</b>

# 1

## Overview

The Stream function enables you to view the NIS-Elements LE window in other devices through the web browser without installing NIS-Elements LE.

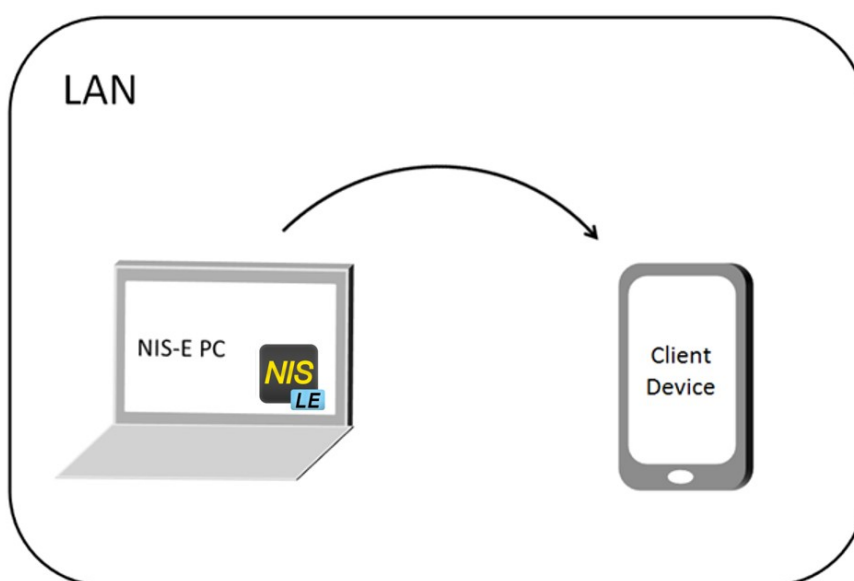
# 2

## Function Modes and Operating Environment

The NIS-Elements LE stream function has the following three modes:

### This Device mode

---



### Overview

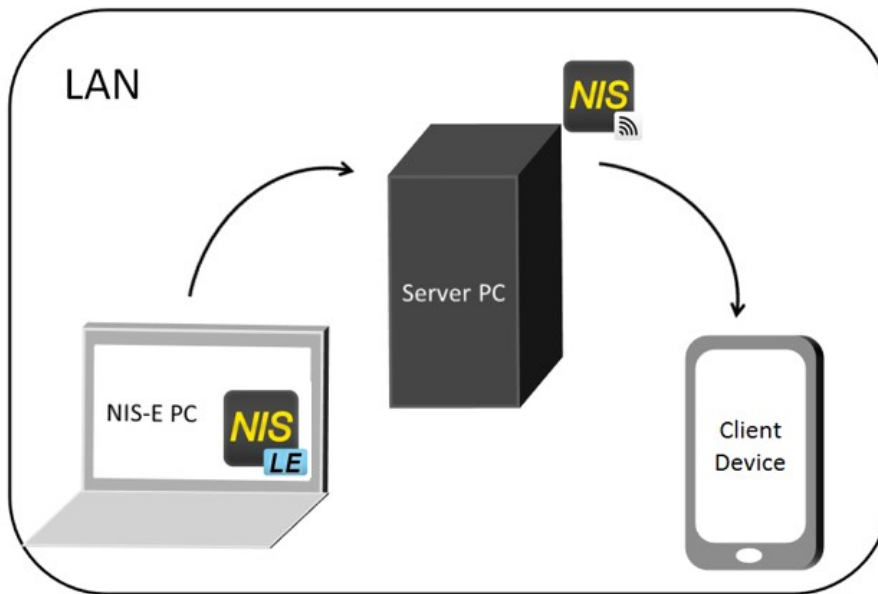
The PC with NIS-Elements LE installed (hereafter referred to as “NIS-Elements PC”) has a role of the HTTP server.

### Configuration

The NIS-Elements PC and a device for viewing the window have to be connected in the same LAN.

## Server mode

---



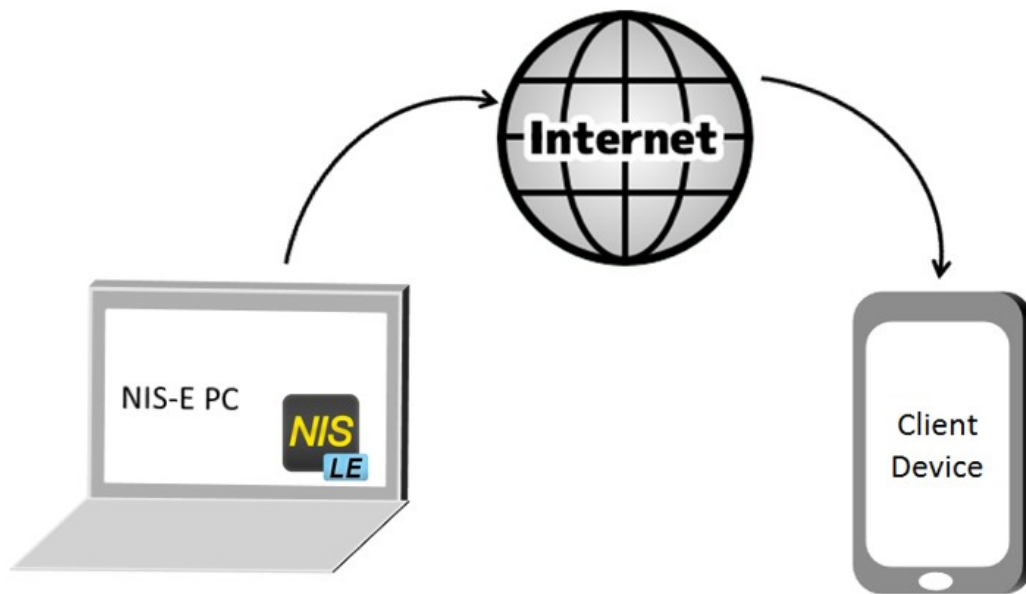
### Overview

An HTTP server is needed in this mode.

Comparing with This Device mode, the load to a NIS-Elements PC is small.

### Configuration

The NIS-Elements PC, the HTTP server and a device for viewing the window have to be connected in the same LAN.



### Overview

In this mode, the NIS-Elements LE window can be viewed through internet video distribution services.

In this mode, the NIS-Elements PC and a device for viewing the NIS-Elements LE window do not have to be connected in the same LAN.

When using this mode, confirm the terms of the video distribution services.

The NIS-Elements LE window is uploaded to the Internet in this mode, so be careful when handling confidential information.

### Configuration

The NIS-Elements PC and a device for viewing the window have to be connected to the Internet.

## 3

## Web Browser

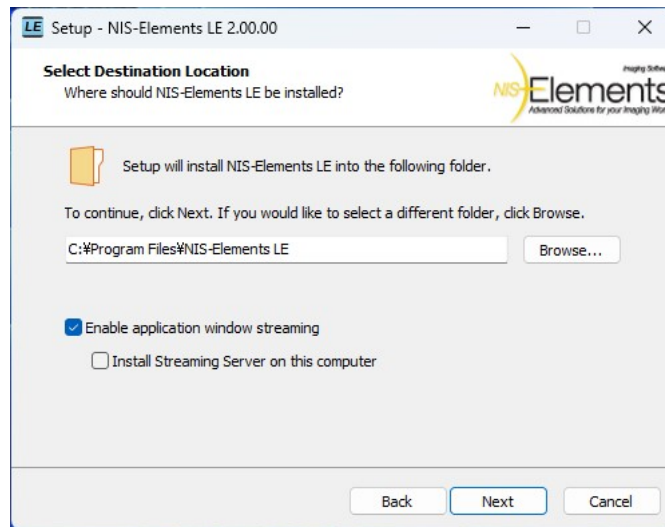
Use the following web browsers:

- Microsoft Edge 40.15063.674.0 or higher
- Mozilla Firefox 67.0 or higher
- Google Chrome 74.0.3729.169 or higher
- Apple Safari 12.0.3 or higher

# 4

## Installation

It is necessary to select options suitable for each mode when installing NIS-Elements LE.



### 4.1 This Device Mode

Select the “Enable application window streaming” and “Install Streaming Server on this computer” checkboxes.

### 4.2 Server Mode

Select the “Enable application window streaming” checkbox in the installation wizard window. Do not select the “Install Streaming Server on this computer” checkbox.

In addition, install the “Server for Stream\ServerSetup.exe”, which is in the installation medium, to the HTTP server.

Do not install the NIS-Elements LE on the HTTP server.

### 4.3 Internet Mode

Select the “Enable application window streaming” checkbox.

Do not select the “Install Streaming Server on this computer” checkbox.

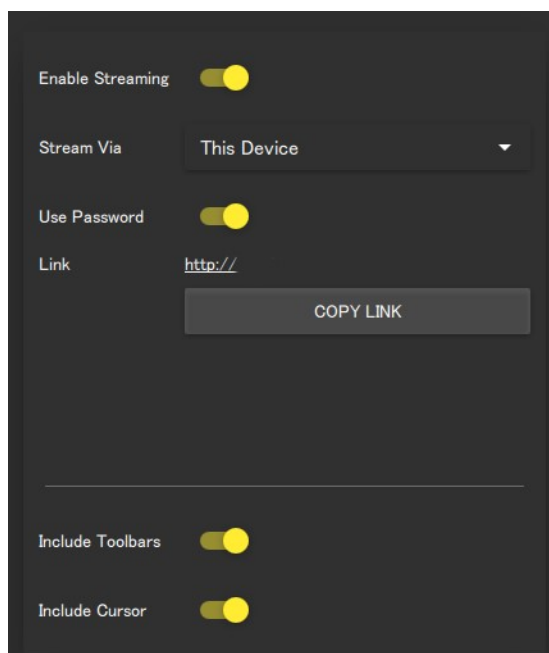
# 5

## How To Use

### 5.1 Set the Streaming Options.

Click Menu and then Streaming Options to open the streaming configuration window.

#### 5.1.1 This Device Mode



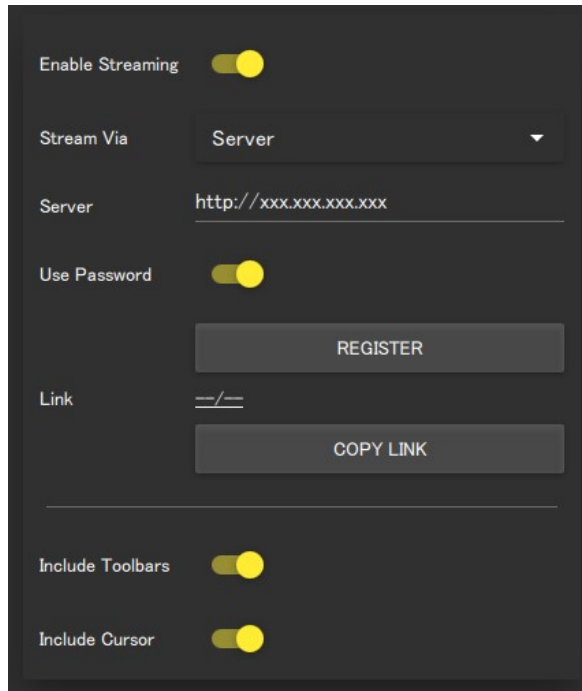
Turn on “Enable Streaming”.

Set “Stream Via” to "This Device".

Inform the user of the URL automatically shown in the Link field.

Turn on “Use Password”, “Include Toolbars” and “Include Cursor” as needed.

### 5.1.2 Server Mode



The screenshot shows a dark-themed configuration window for 'Server Mode'. It contains several settings: 'Enable Streaming' is a toggle switch turned on; 'Stream Via' is a dropdown menu set to 'Server'; 'Server' is a text input field containing 'http://xxx.xxx.xxx.xxx'; 'Use Password' is a toggle switch turned on; there is a 'REGISTER' button; 'Link' is a text input field containing a URL; there is a 'COPY LINK' button; 'Include Toolbars' is a toggle switch turned on; and 'Include Cursor' is a toggle switch turned on.

Turn on “Enable Streaming”.

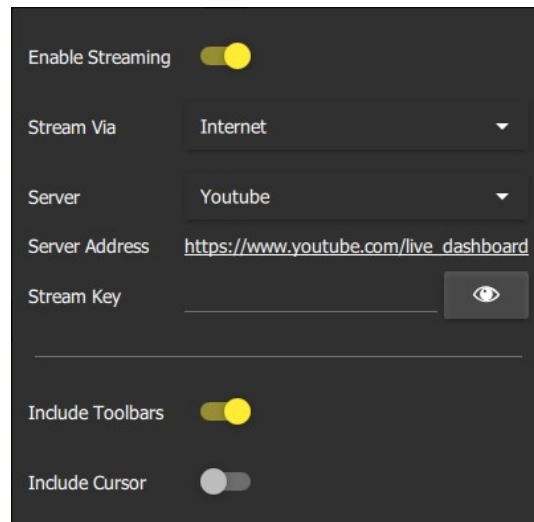
Set “Stream Via” to "Server".

Enter “http://xxx.xxx.xxx.xxx” (IP address of the HTTP server) in the Server field.

Click the [REGISTER] button, and inform the user of the URL automatically shown in the Link field.

Turn on “Use Password”, “Include Toolbars” and “Include Cursor” as needed.

### 5.1.3 Internet Mod

A screenshot of a settings panel for 'Internet Mod'. The panel has a dark background. At the top, 'Enable Streaming' is a toggle switch that is turned on (yellow). Below it, 'Stream Via' is a dropdown menu set to 'Internet'. 'Server' is another dropdown menu set to 'Youtube'. 'Server Address' is a text field containing the URL 'https://www.youtube.com/live\_dashboard'. 'Stream Key' is a text field with a password icon (eye) to its right. Below these, 'Include Toolbars' is a toggle switch that is turned on (yellow), and 'Include Cursor' is a toggle switch that is turned off (grey).

Turn on “Enable Streaming”.

Set “Stream Via” to "Internet".

For “Server”, select the video distribution service from YouTube, Twitch, Vimeo, Periscope and Facebook.

Set the live streaming settings in your video distribution service.

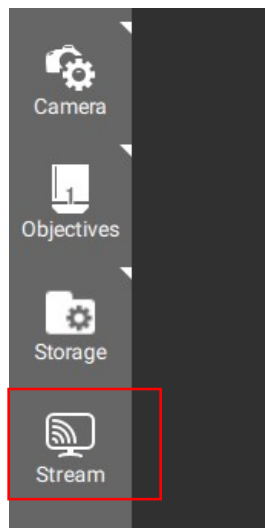
Enter the stream key issued by the video distribution service, in the Stream Key field.

Turn on “Include Toolbars” and “Include Cursor” as needed.

Inform the user of the URL issued by the video distribution service.

## 5.2 Start the Stream.

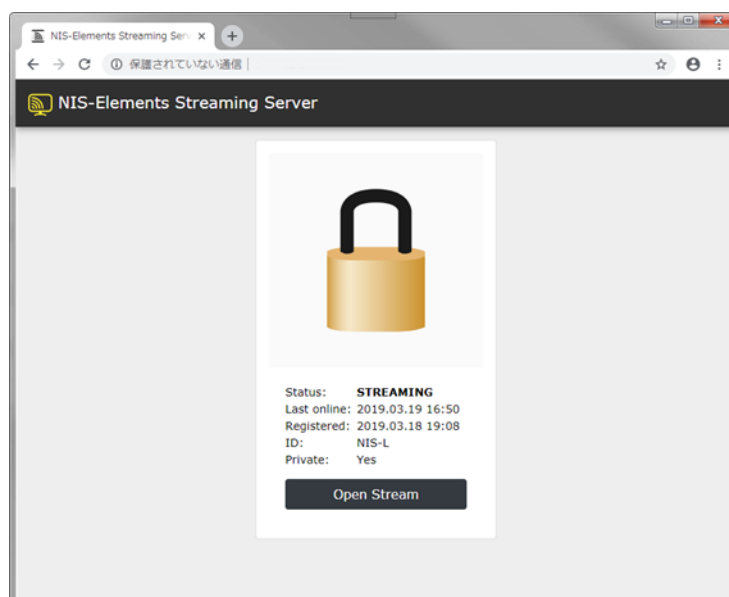
After [5.1 Set the Streaming Options.](#), the [Stream] button is added to the toolbar.



Turn on this button to start streaming.

## 5.3 View the Stream.

Access the specified URL through a web browser in the device for viewing the NIS-Elements LE window. In This Device mode or Server mode, click the [Open Stream] button in the following window to start live streaming.



In Internet mode, the distribution window is displayed in the selected video distribution service.

## 5.4 End the Stream.

Click the [Stream] button on the tool bar.

- It is recommended to connect the NIS-Elements PC and the router using a wired LAN cable for a communication speed reason.
- The streaming response depends on the network speed. Check the network conditions if the response is not satisfactory.
- In This Device mode or Server mode, devices cannot be connected via the proxy server outside the LAN.
- In Server mode, the following settings are necessary if there is no DNS server in the LAN.
  - 1) Open the "nislss.cfg" file in the installation folder of the NIS Streaming Server with a text editor. Then, rewrite line 12 as follows:
 

```
#LIMSTREAM_SERVER_NAME = "
```

↓

```
LIMSTREAM_SERVER_NAME = 'ip'
```

For example, when the IP address is xxx.xxx.xxx.xxx, enter LIMSTREAM\_SERVER\_NAME = 'xxx.xxx.xxx.xxx'.
  - 2) Open the command prompt and enter the following command:
 

```
cd C:\Program Files\NIS Streaming Server (when the default installation directory is used)
nislss_srv.exe -stop
nislss_srv.exe -start
```
- Depending on your proxy server's configuration, the video distribution service may not be able to be used. In such a case, contact the administrator of the proxy server.
- In Server mode, depending on the PC, the port number used in the NIS Streaming Server may be changed from the default setting.
 

If the server is not registered correctly, check the following settings:

  - 1) Open the "nislss.cfg" file in the installation folder of the NIS Streaming Server with a text editor. Then, check the port number displayed in the following property:
 

```
LIMSTREAM_SERVER_PORT = ****
```
  - 2) Enter the IP address with the port number in the Server field in the setting window. :
 

```
http://xxx.xxx.xxx.xxx:**** (port number)
```

For example, when the port number is 8080, enter `http://xxx.xxx.xxx.xxx:8080`.